

Figure 7: Brass Trigger Guard  
(rear tang missing)

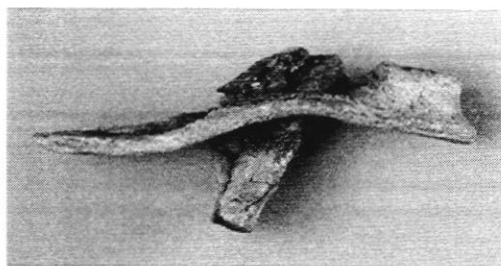
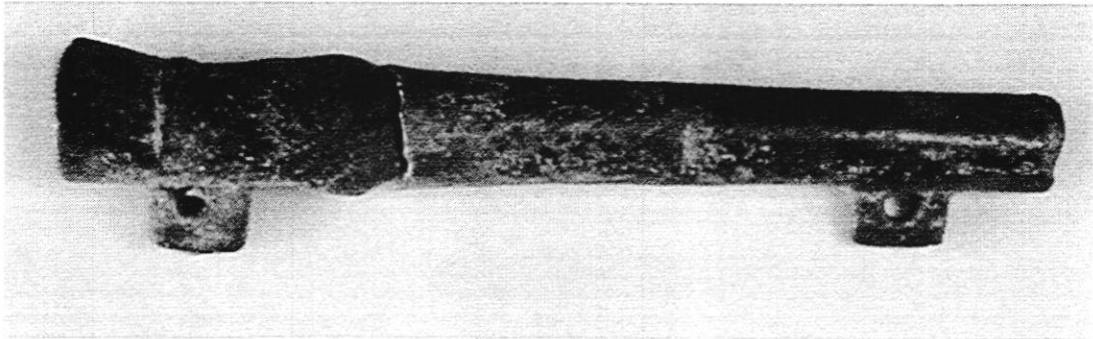
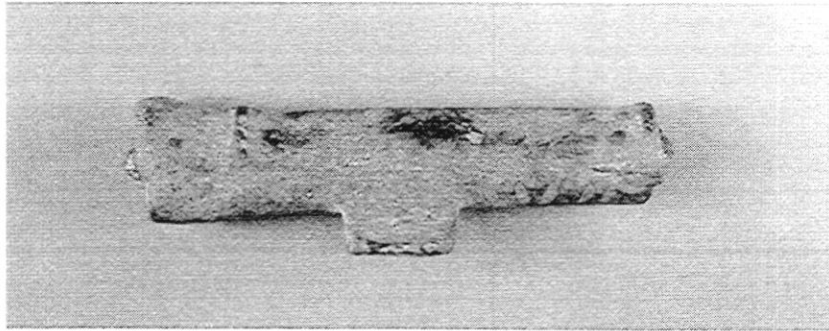


Figure 8: Brass Trigger Plate,  
including fragment of iron trigger



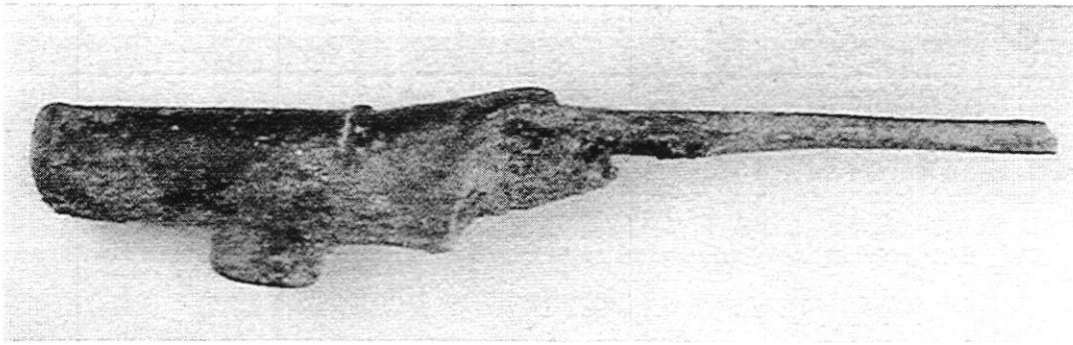
cm 0 1 2 3 4 5

Figure 9: Brass Forward Ramrod Pipe  
(broken)



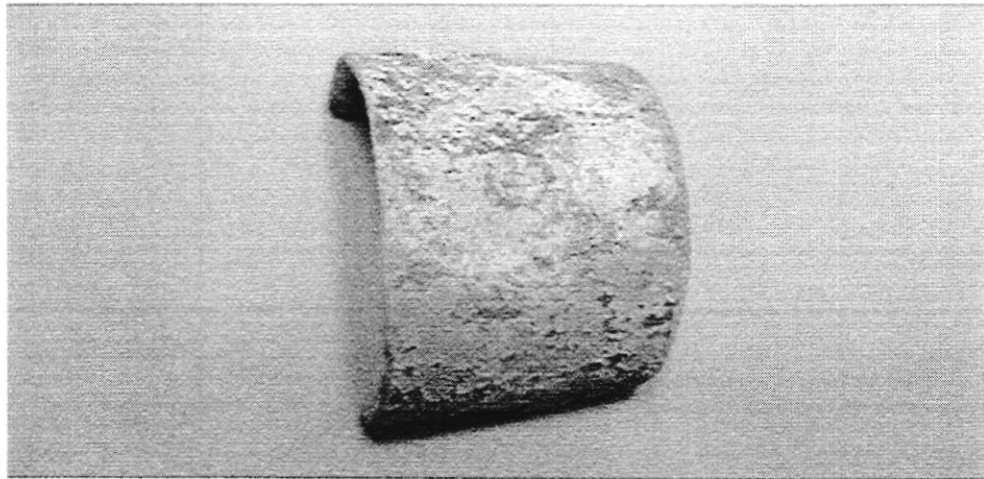
cm 0 1 2 3 4 5

Figure 10: Brass Second or Third  
Ramrod Pipe, including fragment of  
the iron ramrod



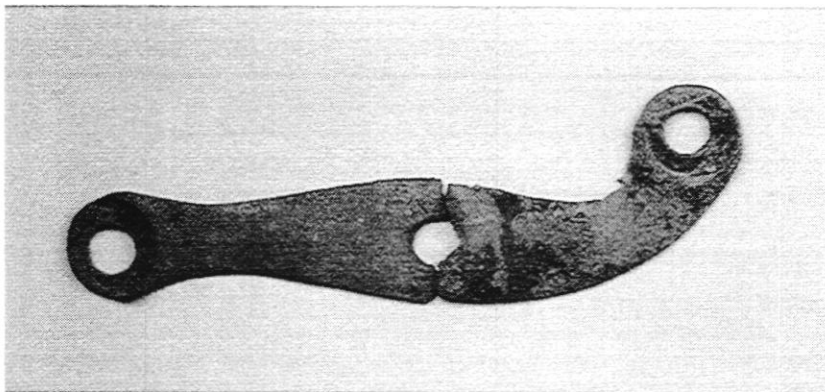
cm 0 1 2 3 4 5

Figure 11: Brass Terminal Ramrod Pipe,  
including fragment of iron ramrod



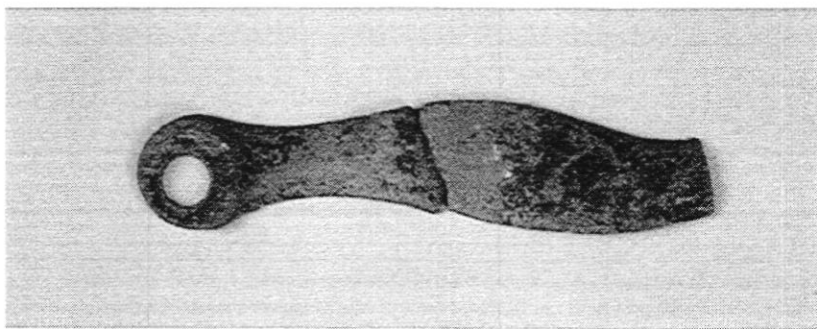
cm 0 1 2 3

Figure 12: Brass Nose Cap, with pin



cm 0 5

Figure 13: Brass Side Plate  
(broken at center screw hole)



cm 0 5

Figure 14: Brass Side Plate  
(broken in three pieces, one end missing)